



INSTRUCTION BULLETIN

No. 340183
Machine: 4300
Published: 12-98/00
System: OPTIONS

NOTE: DO NOT DISCARD the Parts List from the Instruction Bulletin. Place the Parts List in the appropriate place in your machine manual for future reference. Retaining the Parts List will make it easier to reorder individual parts and will save you the cost of ordering an entire kit.

NOTE: Numbers in parenthesis () are reference numbers for parts listed in Bill of Materials.

Installation instructions for kit number 367952

SYNOPSIS / PROBLEM:

This kit contains the parts needed to install a tool box kit on the model ATLV 4300.
Please follow step-by-step instructions.

SPECIAL TOOLS / CONSIDERATIONS: Hand drill, .34in. (11/32) drill bit

(Estimated time to complete: 1 hour)

PREPARATION:

(Refer to FIG. 1, 2 and 3)

FOR SAFETY: Before leaving or servicing machine, stop on level surface and set parking brake. Then turn off machine and remove key.

INSTALLATION:

(Refer to FIG. 1, 2 and 3)

1. Place tool chest box (1) on right rear fender, with hinge assembly mounting holes facing the front of the machine.
2. Center the tool chest box (1) on the fender front to rear and hanging out over the fender approx. .75in.
3. Using the tool chest box (1) as a template, mark the mounting hole positions on the fender.
4. Remove the tool chest box (1), and drill two .34in. (11/32) holes in the newly marked positions.
5. Mount the tool chest cover (2) to the tool chest box (1) with hinge assembly (6), pan screws (7), and locnuts (8). (Refer to FIG. 1, 2 and 3)
6. Mount the latch draw lock (9) to the tool chest box with pop rivets (10).
(Refer to FIG. 1, 2 and 3)
7. Mount the assembled tool box kit to the machine with hex screws (3), washers (4), and nuts (5). (Refer to FIG. 1, 2 and 3)

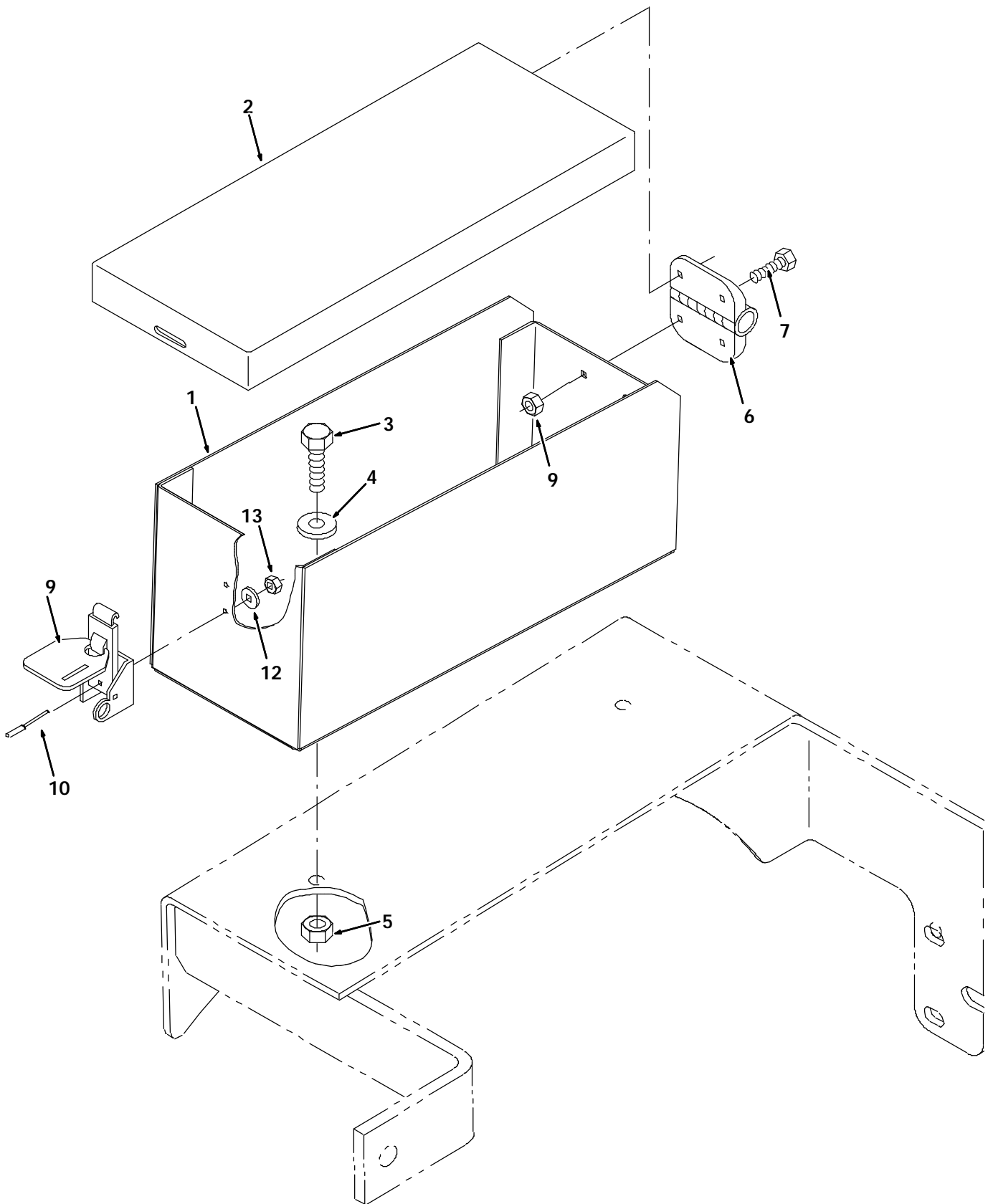


FIG. 1 -

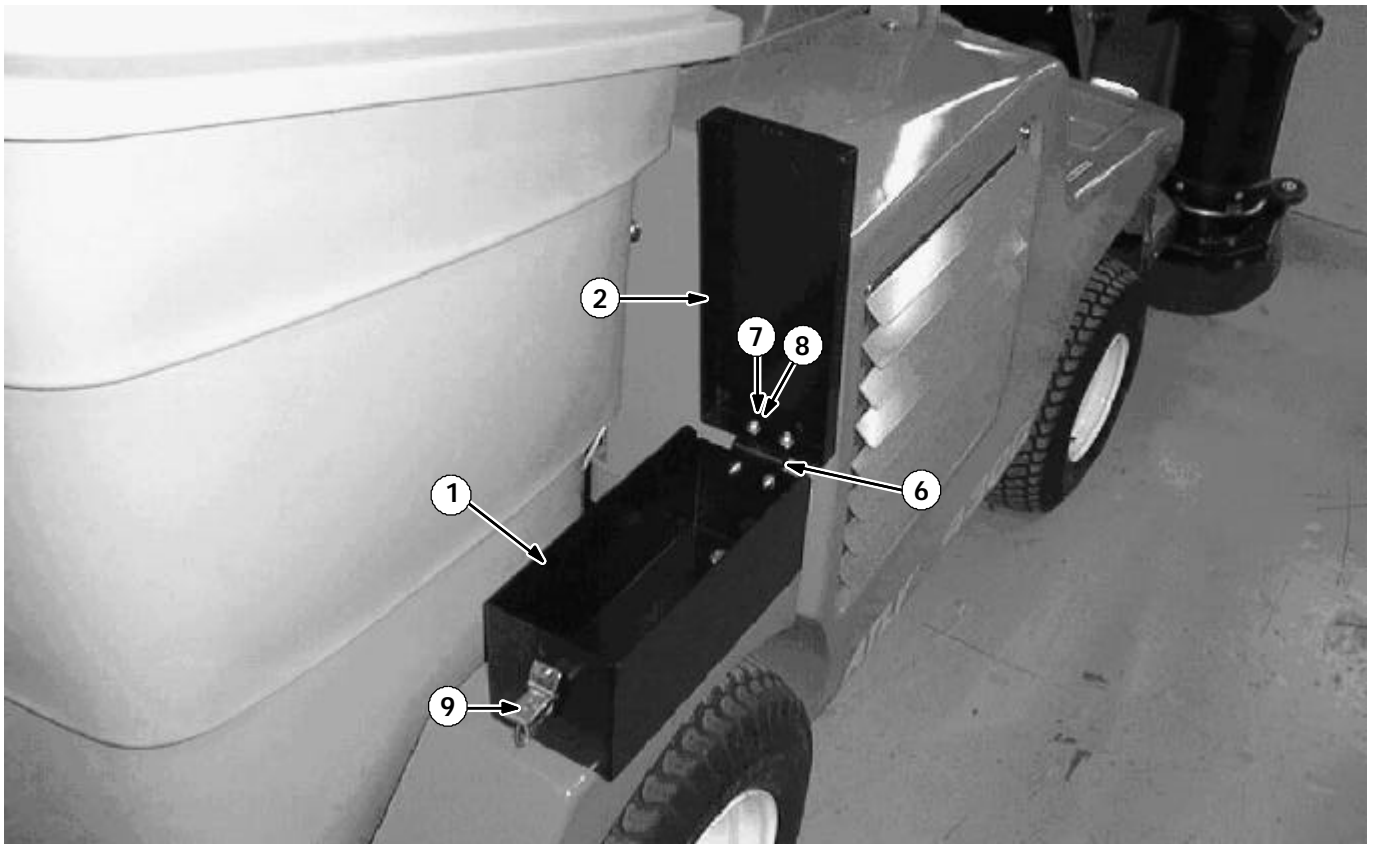


FIG. 2 - TOOLBOX INSTALLATION

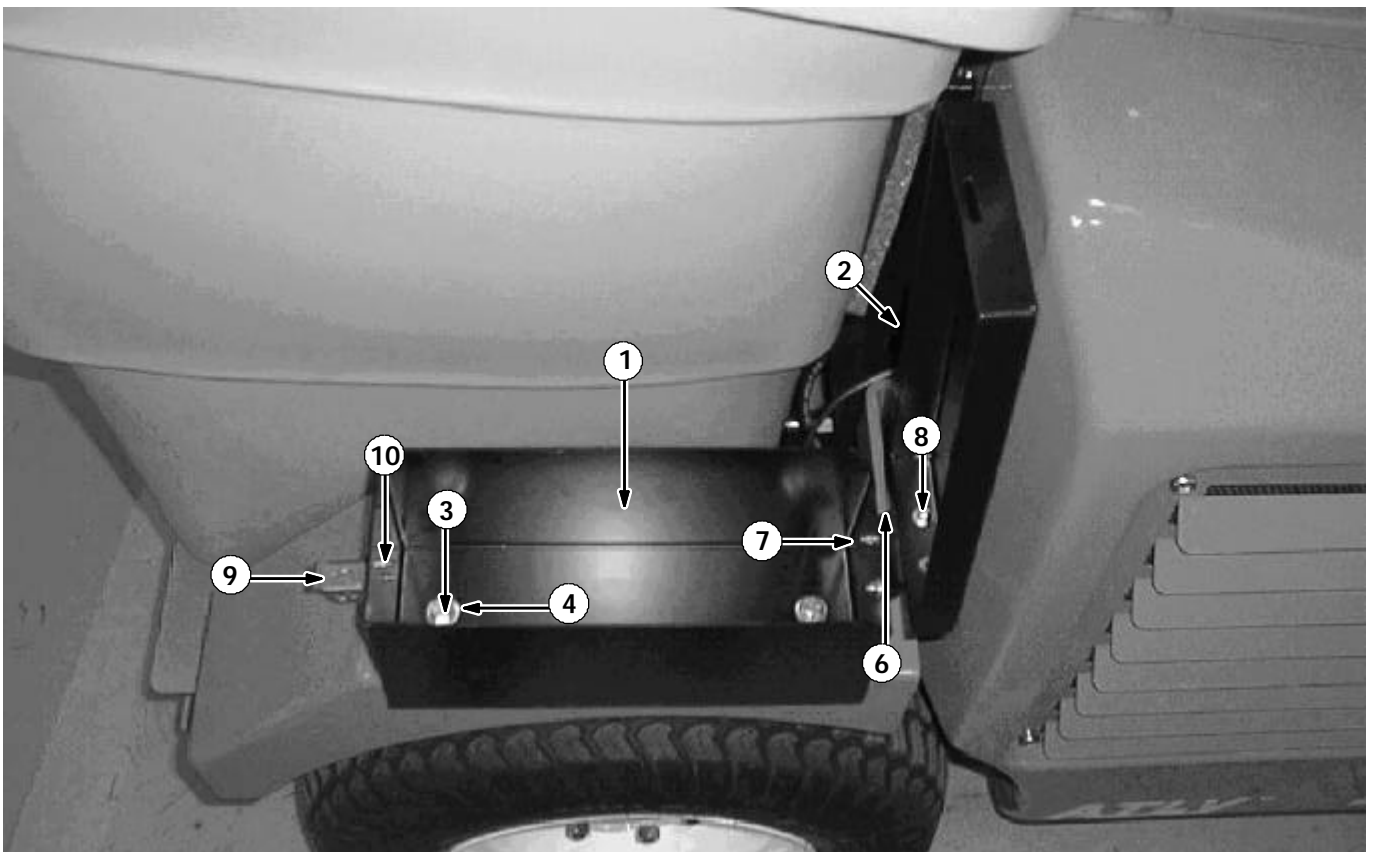


FIG. 3 - TOOLBOX INSTALLATION

BILL OF MATERIALS FOR TOOL BOX KIT 367952

Ref.	TENNANT Part No.	Description	Qty.
1	367768	Box, tool chest	1
2	367769	Cover, tool chest	1
3	09740	Scr, hexss M8 X 1.25	2
4	01685	Washer, flt .31ss	2
5	07791	Nut, hx flange M8 X 1.25	2
6	367950	HInge assembly	1
7	09200	Scr panss M5 X 0.8	4
8	06549	Nut, hxloxnyln M5 X 0.8	4
9	367949	Latch draw lock	1
10	08875	Rivet, pop-	2

TENNANT COMPANY
P. O. Box 1452
Minneapolis, MN 55440-1452